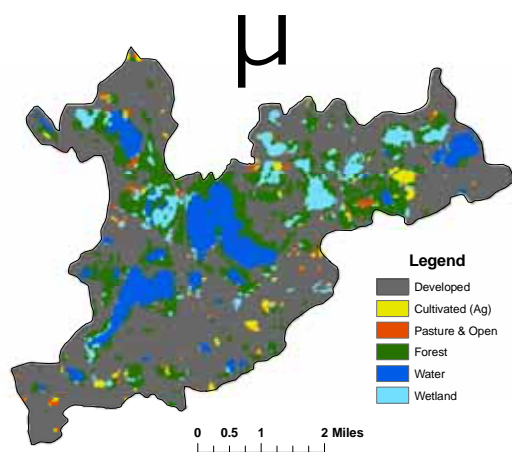


Minnesota Lake ID: 62-0073
Area: 157 acres
Watershed Area: 13,471 acres
Ecoregion: North Central Hardwoods Forests (NCHF)

NLAP ID: 1447
Maximum Depth: 30 ft
Mean Depth: 12 ft



Snail Lake Land Use



Land Use	Snail Lake Land Use %	NCHF Typical Land Use %
Developed	61	2-9
Cultivated (Ag)	2	22-50
Pasture & Open	1	11-25
Forest	18	6-25
Water & Wetland	18	14-30
Feedlots (#)	0	

Snail Lake 2007 as compared to typical range for NCHF ecoregion reference lakes. Single NLAP visit based on U.S. Environmental Protection Agency protocol as compared to typical range for summer-means. Data from Minnesota Department of Health (MDH) laboratory.

Parameter	Snail Lake	NCHF
Number of reference lakes	1	43
Total Phosphorus (µg/L)	13	23 - 50
Chlorophyll mean (µg/L)	5	5 - 22
Secchi Disk (feet)	7.2	4.9 - 10.5
(meters)	2.2	(1.5 - 3.2)
Total Kjeldahl Nitrogen (mg/L)	0.8	< 0.60 - 1.2
Alkalinity (mg/L)		75 - 150
Color (Pt-Co U)	12	10 - 20
pH (SU)	9.2	8.6 - 8.8
Chloride (mg/L)	76	4 - 10
Total Suspended Solids (mg/L)		2 - 6
Total Suspended Inorganic Solids (mg/L)		1 - 2
Conductivity (umhos/cm)	395	300 - 400
TN:TP ratio	58:1	25:1 - 35:1
Microcystin(µg/L)	Near Shore	<10 Low Risk
WHO risk Category*	Index Site	10-20 Moderate Risk
	<0.15	20- 200 High Risk

Mixing Status: thermally stratified (dimictic)

