



Minnesota Pollution Control Agency

520 Lafayette Road
St. Paul, MN 55155-4194

Jennie Lake, Meeker County

National Lake Assessment Project (NLAP)

Sample Date: August 21, 2007

Minnesota Lake ID: 47-0015

Area: 1,058 acres

Watershed Area: 16,567 acres

Ecoregion: North Central Hardwoods Forests (NCHF)

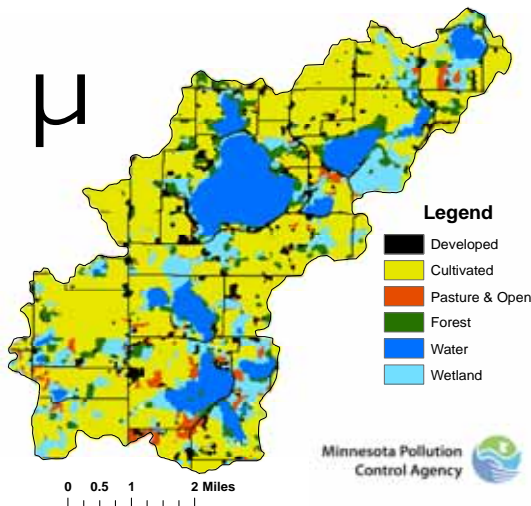
NLAP ID: 1175

Maximum Depth: 15 ft

Mean Depth: 8 ft



Lake Jennie Land Use



Land Use	Lake Jennie Land Use %	NCHF Typical Land Use %
Developed	8	2-9
Cultivated (Ag)	54	22-50
Pasture & Open	3	11-25
Forest	7	6-25
Water & Wetland	29	14-30
Feedlots (#)	10	

Minnesota 2000 Level 1 Landsat Landcover Classification.img

University of Minnesota & Geospatial Analysis Lab

Lake Jennie 2007 as compared to typical range for NCHF ecoregion reference lakes. Single NLAP visit based on U.S. Environmental Protection Agency protocol as compared to typical range for summer-means.
 Data from Minnesota Department of Health (MDH) laboratory.

Parameter	Lake Jennie (MDH)		NCHF
Number of reference lakes	1		43
Total Phosphorus (µg/L)	68		23 - 50
Chlorophyll-a (µg/L)	37		5 - 22
Secchi Disk (feet)	2		4.9 - 10.5
(meters)	0.6		(1.5 - 3.2)
Total Kjeldahl Nitrogen (mg/L)	1.8		< 0.60 - 1.2
Alkalinity (mg/L)	140		75 - 150
Color (Pt-Co U)	5		10 - 20
pH (SU)	8.7		8.6 - 8.8
Chloride (mg/L)	27		4 - 10
Total Suspended Solids (mg/L)	16		2 - 6
Total Suspended Inorganic Solids (mg/L)	6.4		1 - 2
Conductivity (umhos/cm)	259		300 - 400
TN:TP ratio	26:1		25:1 - 35:1
Microcystin(µg/L)	Near Shore	Index Site	<10 Low Risk
WHO risk Category*	3.4	3	10-20 Moderate Risk
			20- 200 High Risk

* Guidelines for safe recreational water environments (World Health Organization, 2003)

µg/L = micrograms per liter
 mg/L = milligrams per liter
 umhos/cm = micromhos per centimeter

Pt-Co-U = Platinum Cobalt Units
 SU = Standard Units

Mixing Status: mixed with no temperature layer (polymictic)

