



Minnesota Pollution Control Agency

520 Lafayette Road
St. Paul, MN 55155-4194

Nest Lake, Kandiyohi County

National Lake Assessment Project (NLAP)

Sample Date: August 22, 2007

Minnesota Lake ID: 34-0154

Area: 952 acres

Watershed Area: 24,557 acres

Ecoregion: North Central Hardwoods Forests (NCHF)

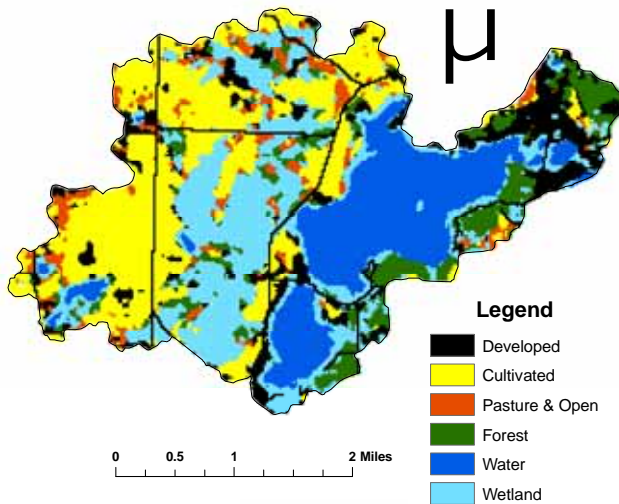
NLAP ID: 0215

Maximum Depth: 40 ft

Mean Depth: 20 ft



Nest Lake Land Use



Land Use	Nest Lake Land Use %	NCHF Typical Land Use %
Developed	13	2-9
Cultivated (Ag)	23	22-50
Pasture & Open	8	11-25
Forest	20	6-25
Water & Wetland	36	14-30
Feedlots (#)	14	



Minnesota 2000 Level 1 Landsat Landcover
Classification.img

University of Minnesota Remote & Geospatial Analysis Lab

Nest Lake 2007 as compared to typical range for NCHF ecoregion reference lakes. Single NLAP visit based on U.S. Environmental Protection Agency protocol as compared to typical range for summer-means.

Data from Minnesota Department of Health (MDH) laboratory.

Parameter	Nest Lake (MDH)	NCHF
Number of reference lakes	1	43
Total Phosphorus (µg/L)	93	23 - 50
Chlorophyll-a (µg/L)	44	5 - 22
Secchi Disk (feet)	2.5	4.9 - 10.5
(meters)	0.75	(1.5 - 3.2)
Total Kjeldahl Nitrogen (mg/L)	1.6	< 0.60 - 1.2
Alkalinity (mg/L)	160	75 - 150
Color (Pt-Co U)	5	10 - 20
pH (SU)	8.8	8.6 - 8.8
Chloride (mg/L)	17	4 - 10
Total Suspended Solids (mg/L)	11	2 - 6
Total Suspended Inorganic Solids (mg/L)	1.8	1 - 2
Conductivity (umhos/cm)	272	300 - 400
TN:TP ratio	17:1	25:1 - 35:1
Microcystin(µg/L)	Near Shore	<10 Low Risk
WHO risk Category*	Index Site	10-20 Moderate Risk
	2.9	20- 200 High Risk
	4.6	

* Guidelines for safe recreational water environments (World Health Organization, 2003)

µg/L = micrograms per liter

mg/L = milligrams per liter

umhos/cm = micromhos per centimeter

Pt-Co-U = Platinum Cobalt Units

SU = Standard Units

Mixing Status: mixed with no temperature layer (polymictic)

Temperature and Dissolved Oxygen Profile for Nest Lake. August 22, 2007.
Temp. (C) and DO (mg/L)

