



# Minnesota Pollution Control Agency

520 Lafayette Road  
St. Paul, MN 55155-4194

# Fanny Lake, Douglas County

National Lake Assessment Project (NLAP)

Sample Date: July 11, 2007

**Minnesota Lake ID:** 21-0336

**Area:** 38 acres

**Watershed Area:** 10,025 acres

**Ecoregion:** North Central Hardwoods Forests (NCHF)

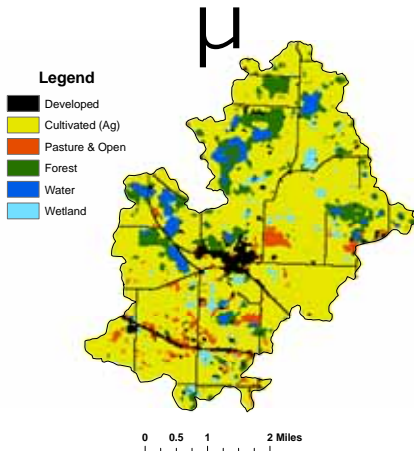
**NLAP ID:** 0686

**Maximum Depth:** 3.5 ft

**Mean Depth:** 2.5 ft



Fanny Lake Land Use



Land Use	Fanny Lake Land Use %	NCHF Typical Land Use %
Developed	7	2-9
Cultivated (Ag)	72	22-50
Pasture & Open	4	11-25
Forest	10	6-25
Water & Wetland	7	14-30
Feedlots (#)	17	

Minnesota 2000 Level 1 Landsat Landcover Classification.img

University of Minnesota Remote & Geospatial Analysis Lab

Fanny Lake 2007 as compared to typical range for NCHF ecoregion reference lakes. Single NLAP visit based on U.S. Environmental Protection Agency protocol as compared to typical range for summer-means.

Parameter	Fanny		NCHF
Number of reference lakes	1		43
Total Phosphorus (µg/L)	122		23 - 50
Chlorophyll mean (µg/L)	4		5 - 22
Secchi Disk (feet)	3.6		4.9 - 10.5
(meters)	1.1		(1.5 - 3.2)
Total Kjeldahl Nitrogen (mg/L)	1.3		< 0.60 - 1.2
Alkalinity (mg/L)			75 - 150
Color (Pt-Co U)	40		10 - 20
pH (SU)	9.4		8.6 - 8.8
Chloride (mg/L)	70		4 - 10
Total Suspended Solids (mg/L)			2 - 6
Total Suspended Inorganic Solids (mg/L)			1 - 2
Conductivity (umhos/cm)	416		300 - 400
TN:TP ratio	11:1		25:1 - 35:1
Microcystin(µg/L)	Near Shore	Index Site	<10 Low Risk
WHO risk Category*	0.15	0.15	10-20 Moderate Risk
			20- 200 High Risk

\* Guidelines for safe recreational water environments (World Health Organization, 2003)

µg/L = micrograms per liter

mg/L = milligrams per liter

umhos/cm = micromhos per centimeter

Pt-Co-U = Platinum Cobalt Units

SU = Standard Units

Mixing Status: mixed with no temperature layer (polymictic)

