



# Minnesota Pollution Control Agency

520 Lafayette Road  
St. Paul, MN 55155-4194

# Lake Victoria, Douglas County

National Lake Assessment Project (NLAP)

Sample Date: July 24, 2007

**Minnesota Lake ID:** 21-0054

**Area:** 417 acres

**Watershed Area:** 15,984 acres

**Ecoregion:** North Central Hardwoods Forests (NCHF)

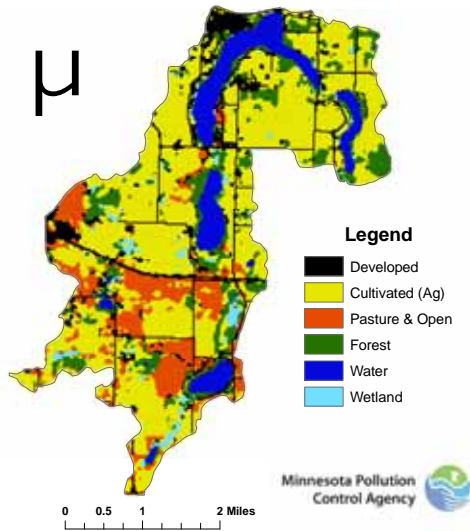
**NLAP ID:** 0622

**Maximum Depth:** 60 ft

**Mean Depth:** 35 ft



Lake Victoria Land Use



Land Use	Lake Victoria Land Use %	NCHF Typical Land Use %
<b>Developed</b>	<b>12</b>	<b>2-9</b>
<b>Cultivated (Ag)</b>	<b>52</b>	<b>22-50</b>
<b>Pasture &amp; Open</b>	<b>12</b>	<b>11-25</b>
<b>Forest</b>	<b>12</b>	<b>6-25</b>
<b>Water &amp; Wetland</b>	<b>12</b>	<b>14-30</b>
<b>Feedlots (#)</b>	<b>11</b>	

Minnesota 2000 level 1 Landsat Landcover Classification.img

University of Minnesota Remote & Geospatial Analysis Lab

**Lake Victoria 2007 as compared to typical range for NCHF ecoregion reference lakes. Single NLAP visit based on U.S. Environmental Protection Agency protocol as compared to typical range for summer-means. Data from Minnesota Department of Health (MDH) laboratory.**

Parameter	Victoria (MDH)		NCHF
Number of reference lakes	1		43
Total Phosphorus (µg/L)	18		23 - 50
Chlorophyll-a (µg/L)	3		5 - 22
Secchi Disk (feet)	4.3		4.9 - 10.5
(meters)	1.3		(1.5 - 3.2)
Total Kjeldahl Nitrogen (mg/L)	0.67		< 0.60 - 1.2
Alkalinity (mg/L)	160		75 - 150
Color (Pt-Co U)	5		10 - 20
pH (SU)	8.6		8.6 - 8.8
Chloride (mg/L)	20		4 - 10
Total Suspended Solids (mg/L)	4		2 - 6
Total Suspended Inorganic Solids (mg/L)	1.6		1 - 2
Conductivity (umhos/cm)	380		300 - 400
TN:TP ratio	37:1		25:1 - 35:1
Microcystin(µg/L)	Near Shore	Index Site	<10 Low Risk
WHO risk Category*	0.2	0.4	10-20 Moderate Risk
			20- 200 High Risk

\* Guidelines for safe recreational water environments (World Health Organization, 2003)

µg/L = micrograms per liter  
 mg/L = milligrams per liter  
 umhos/cm = micromhos per centimeter

Pt-Co-U = Platinum Cobalt Units  
 SU = Standard Units