



Minnesota Pollution Control Agency

520 Lafayette Road
St. Paul, MN 55155-4194

Crow Wing Lake, Crow Wing County

National Lake Assessment Project (NLAP)

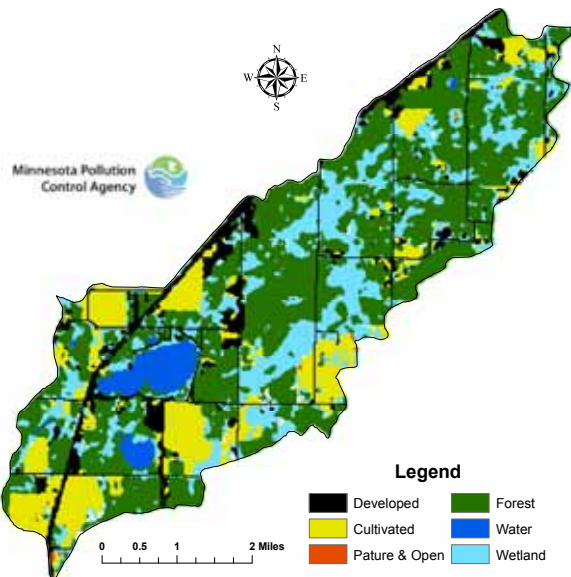
Sample Date: July 30, 2007

Minnesota Lake ID: 18-0155
Area: 355 acres
Watershed Area: 10,850 acres
Ecoregion: Northern Lakes and Forests (NLF)

NLAP ID: 0990
Maximum Depth: 26 ft
Mean Depth: 15 ft



Crow Wing Lake Land Use



Land Use	Crow Wing Land Use %	NLF Typical Land Use %
Developed	12	0-7
Cultivated (Ag)	10	< 1
Pasture & Open	0	0-6
Forest	53	54-81
Water & Wetland	25	14-31
Feedlots (#)	1	

Minnesota 2000 Level 1 landsat Landcover Classification.img

University of Minnesota Remote & Geospatial Analysis Lab

**Crow Wing Lake 2007 as compared to typical range for NLF ecoregion reference lakes.
 Single NLAP visit based on EPA protocol as compared to typical range for summer-means.
 Data from Minnesota Department of Health (MDH) laboratory.**

Parameter	Crow Wing (MDH)	NLF
Number of reference lakes	1	32
Total Phosphorus (µg/L)	45	14 - 27
Chlorophyll mean (µg/L)	18	4 - 10
Secchi Disk (feet)	1	8 - 15
(meters)	3.3	2.4 - 4.6
Total Kjeldahl Nitrogen (mg/L)	1.1	0.4 - 0.75
Alkalinity (mg/L)	97	40 - 140
Color (Pt-Co Units)	5	10 - 35
pH (SU)	8.7	7.2 - 8.3
Chloride (mg/L)	3.1	0.6 - 1.2
Total Suspended Solids (mg/L)	8	< 1 - 2
Total Suspended Inorganic Solids (mg/L)	2.4	< 1 - 2
Conductivity (umhos/cm)	146	50 - 250
TN:TP ratio	24:1	25:1 - 35:1
Microcystin (µg/L)	Near	<10 Low Risk
WHO risk Category*	Shore Index Site <0.15 <0.15	10-20 Moderate Risk 20- 200 High Risk

*Guidelines for safe recreational water environments (World Health Organization, 2003)

µg/L = micrograms per liter
 mg/L = milligrams per liter
 umhos/cm = micromhos per centimeter

Pt-Co-U = Platinum Cobalt Units
 SU = Standard Units

Mixing Status: thermally stratified (dimictic)

**Temperature and Dissolved Oxygen Profile for
 Crow Wing Lake. July 30, 2007.**

