



**Minnesota Pollution Control Agency**

520 Lafayette Road  
St. Paul, MN 55155-4194

# Eagle Lake (North), Blue Earth County

National Lake Assessment Project (NLAP)

Sample Date: August 8, 2007

**Minnesota Lake ID:** 07-0060-01

**Area:** 914 acres

**Watershed Area:** 7,896 acres

**Ecoregion:** Western Cornbelt Plains (WCBP)

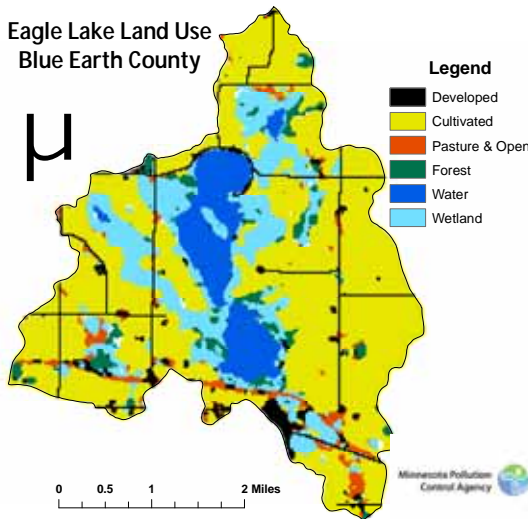
**NLAP ID:** 0279

**Maximum Depth:** 10 ft

**Mean Depth:** 7 ft



Eagle Lake Land Use  
Blue Earth County



Land Use	Eagle Lake Land Use %	WCBP Typical Land Use %
Developed	6	0-16
Cultivated (Ag)	59	42-75
Pasture & Open	3	0-7
Forest	5	0-15
Water & Wetland	27	3-26
Feedlots (#)	5	

Minnesota 2000 Level 1 Landsat Landcover  
Classification .img

University of Minnesota Remote & Geospatial Analysis Lab

**Eagle Lake 2007 as compared to typical range for WCBP ecoregion reference lakes. Single NLAP visit based on U.S. Environmental Protection Agency protocol as compared to typical range for summer means. Data from Minnesota Department of Health (MDH) laboratory.**

Parameter	Eagle (MDH)	WCBP
Number of reference lakes	1	16
Total Phosphorus (µg/L)	245	65 - 150
Chlorophyll mean (µg/L)	115	30 - 80
Secchi Disk (feet)	.7	1.6 - 3.3
(meters)	.2	0.5 - 1.0
Total Kjeldahl Nitrogen (mg/L)	4.3	1.3 - 2.7
Alkalinity (mg/L)	100	125 - 165
Color (Pt-Co Units)	30	15 - 25
pH (SU)	9.5	8.2 - 9.0
Chloride (mg/L)	25	13 - 22
Total Suspended Solids (mg/L)	78	7 - 18
Total Suspended Inorganic Solids (mg/L)	12	3 - 9
Conductivity (umhos/cm)	267	300 - 650
TN:TP ratio	18:1	17:1 - 27:1
Microcystin(µg/L)	Near	<10 Low Risk
WHO risk Category*	Shore	10-20 Moderate Risk
	4.3	20- 200 High Risk
	Index	
	Site	
	2.8	

\*Guidelines for safe recreational water environments (World Health Organization, 2003)

µg/L = micrograms per liter  
 mg/L = milligrams per liter  
 umhos/cm = micromhos per centimeter

Pt-Co-U = Platinum Cobalt Units  
 SU = Standard Units

**Mixing Status: mixed with no temperature layer (polymictic)**

