

Site Reopen Process & Guidance Document 3-16

Assessment of Petroleum Contamination at Closed Leaksites

**Kate Funk
Sarah Larsen**

**Petroleum Remediation Program
Consultants Day
September 25, 2008**



Minnesota
Pollution
Control
Agency

Site Reopen Process

- **Contamination found at closed leakesite**
- **Report to State Duty Officer**
- **Consultant submits analytical data and site map to MPCA within 30 days.**
- **MPCA Decision within 60 days to reopen/assign new leakesite/remain closed.**
 - **Data from closed site compared to new data.**



Site Reopen Process

Possible Outcomes:

- **Leaksite remains closed**
 - Refer to PBP for assurances
- **New leak number is assigned**
 - If a new release is discovered
 - If there is a release from a new source



Site Reopen Process

- **Leaksite is reopened**
 - **If new policy since time of closure requires additional investigation**
 - **If higher levels of contamination are found or free product and no new source is present**
 - **If new info is provided indicating the need for additional MPCA oversight**

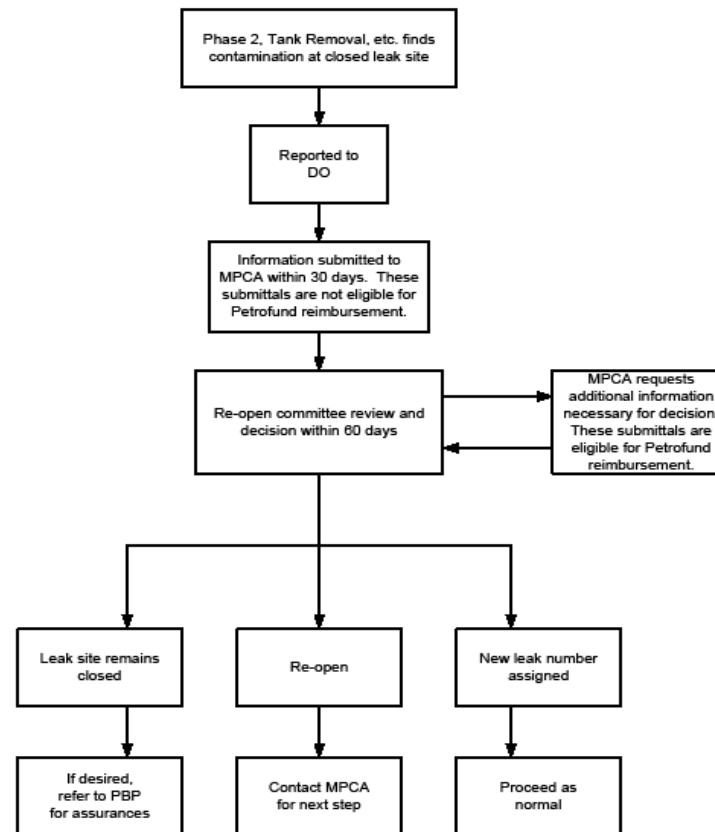
Questions?



Minnesota Pollution Control Agency

Site Reopen Process

ASSESSMENT OF PETROLEUM CONTAMINATION AT CLOSED LEAK SITES



Reimbursement questions? Contact Petrofund at 651-215-1775 or 1-800-638-0418.