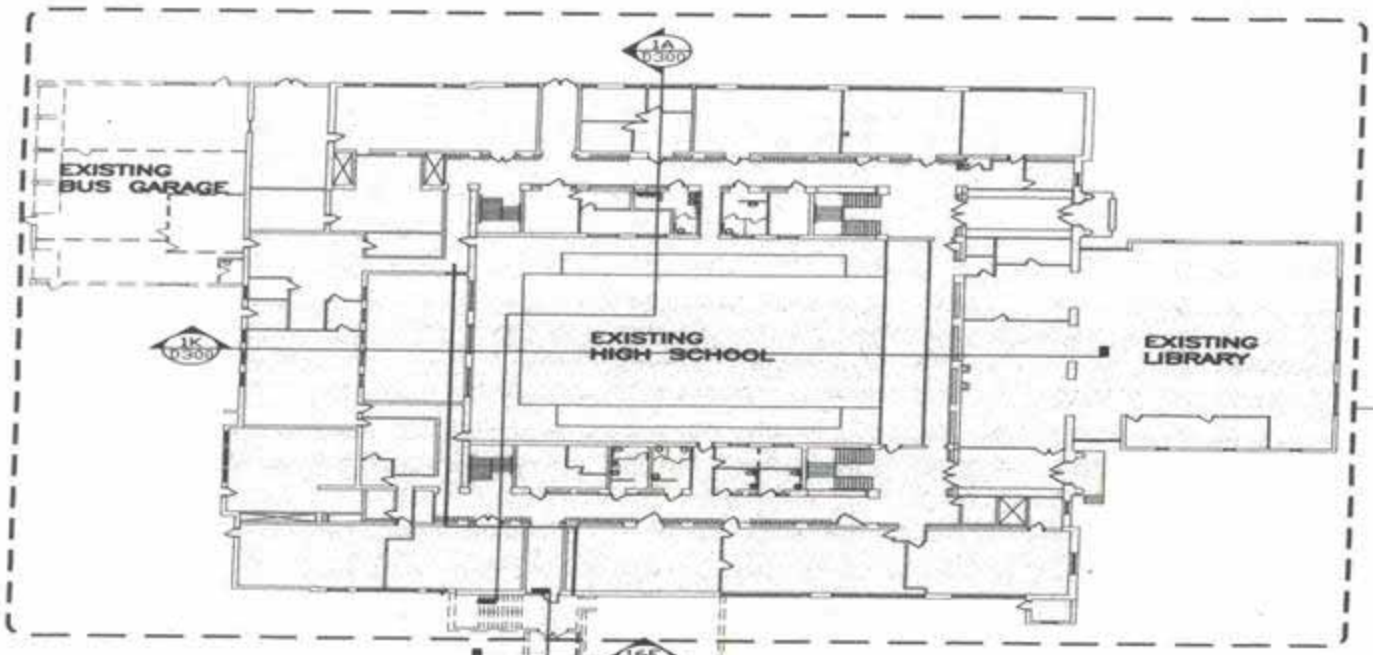


Deconstruction an Alternate Choice



3 Buildings to be Deconstructed

The background of the slide features a pattern of stylized, overlapping leaves in various shades of orange, brown, and tan. The leaves are rendered in a flat, graphic style, creating a textured, autumnal effect. The overall color palette is warm and monochromatic.



NG BELOW GRADE
Y TUNNEL TO
N

Island Garage

- Dimensions – 65' x 44'
- Block Design
- Pitched Rubber Roof



Bus Garage

- Dimensions 78' x 44'
- Metal Truss and Beam Design
- Flat Rubber Roof



Science Annex

- Dimensions – 145' x 70'
- Block and Brick Design
- Flat Rubber Roof



Differences in Techniques

The background of the slide features a pattern of stylized autumn leaves. The leaves are rendered in various shades of orange, from light and airy to dark and rich, creating a textured, layered effect. The overall color palette is warm and monochromatic, typical of fall foliage.

Demolition

- Lots of Labor
- Short Period of Time
- Possible Fire or Explosion
- Hidden Hazards
 - Vermiculite
- Lingering Liabilities
- Public Perception

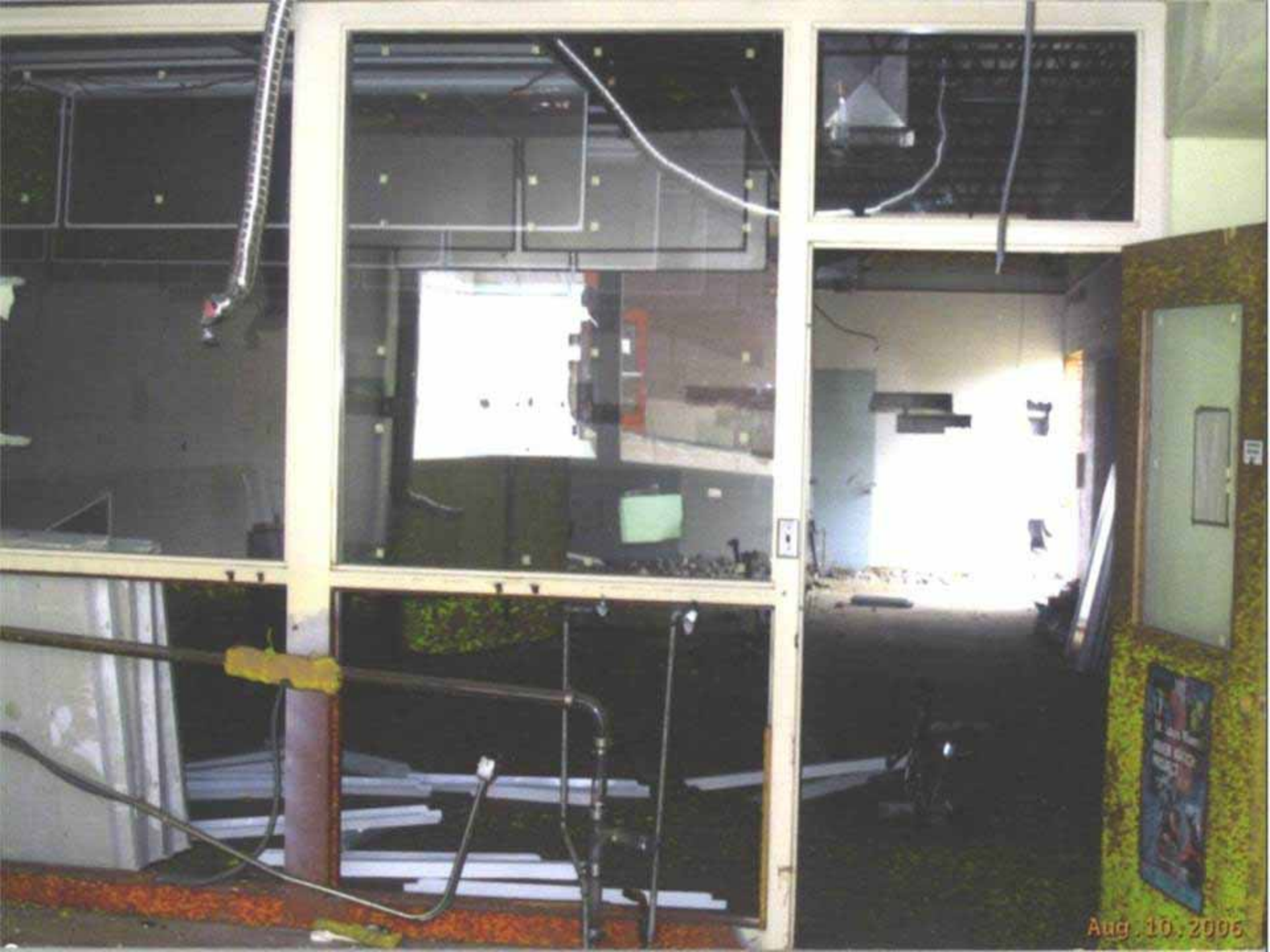
Deconstruction

- Smaller Equipment
- Less Chance of Fire and Explosion
- Hidden Hazards Detectable
- Longer Time Table
- More Space to Sort
- Less Liability
- Public Perception

Project Information

- Approximately \$120,000
- Labor 4 Men – 5 Weeks
- Equipment Utilized
 - PC-60 Backhoe
 - 312 Backhoe
 - 277 Skidsteer
 - Dumptruck
 - Articulating Dumptruck
 - 924 Loader 2 cy
- Rented small backhoe with breaker - \$2,500





Aug. 10. 2006





Aug. 10



Aug. 10, 2006



Aug. 10.



Aug. 10. 2006



Jul 2





CAT

312C L

CAT

RECYCLING
NO BURNING
NO OIL
NO FLAMMABLES



Aug. 17, 2006













RAL
TE
(888) - 779 - JEMO
(3366)







JUL 31 2005



Jul 31 2006













Project Quantities Salvaged

Recycled

- 450 Tons Brick
- 3562 Tons Block
- 3600 tons Concrete Slab
- 33 Tons Steel
- 400 Lbs. Brass
- 500 Lbs. Copper
- 700 4' x 8' x 2" Styrofoam

Project Quantities Salvaged

Given Away

- 2 - Bodine Heaters
- 300 - Lbs. 7" Screws
- 20 - Roof Turbines
- 250 - 5/8" Sheetrock
- 1300 - Square Feet Rubber Roofing
- 30 - Cabinets
- 200 - 4' x 8' Buffalo Board
- 4 - 20' x 12" H Beams
- 8 - Interior Doors

Demolition Estimate

- Approximately 8000 tons @ \$30.67

=

Tipping Fees - \$245,360

+

Trucking 106 Mile Round Trip = \$100,000

Grand Total \$345,360

Approximate Project Costs

- Bid – Approximately \$120,000

- Labor

■ 4 Men 5 weeks for 1000 hours @ \$50.00 per hour	\$50,000
■ Equipment Rental	\$2,500
■ Insurance Bonding , Fuel, Equipment & Misc.	\$38,000
■ Tipping Fees	
■ Demolition 227.29 Tons	\$6,970.98
■ MSW 48.44 Tons	\$2,210.32
■ Approximate Total Expenses	\$100,000
■ Approximate Profit	\$20,000
■ Recyclables Income	\$11,000

Where Did It Go?

- Styrofoam - Beauty Salon Construction
 - Sawmill Wall Insulation
 - Retailer Sold
- Doors – Installed on 2 new garages
- Sheetrock – Installed in 3 garages
- Rubber Roofing – Installed on 2 hunting shack roofs
- Steel – Baled and shipped to Canada
- Concrete – Crushed this spring for road maintenance projects in Aurora



You Will Think

Aug. 10. 2006