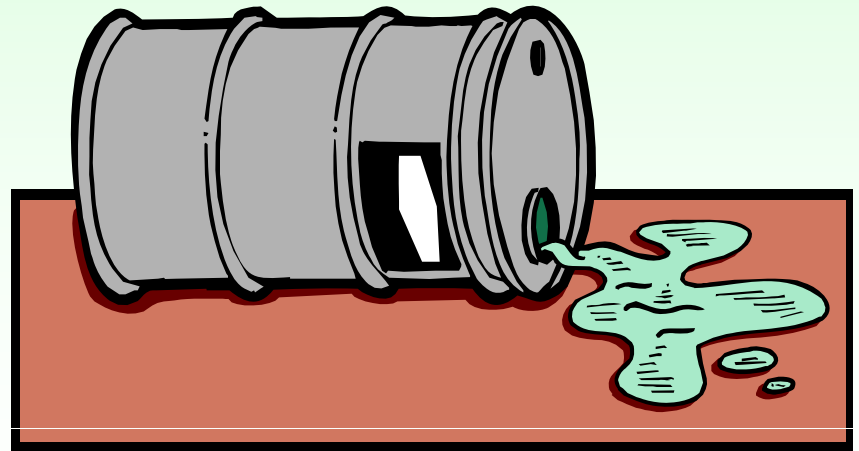

BASIC SPILL PREPAREDNESS, EQUIPMENT, AND SUPPLIES



Delivering Environmental, Industrial, and Emergency Solutions



Training Objectives

- Response Strategies before Help Arrives
- What potential receptors surround your facility?
- How do we identify the receptors?
- How can we protect them?
- Prevention / Preparedness





2007/03/05







BFGX

1648

HD LMT 200 101
LT 101 628407 NEW YORK

NOT IN COMP. SIDES

NOT IN COMP. SIDES



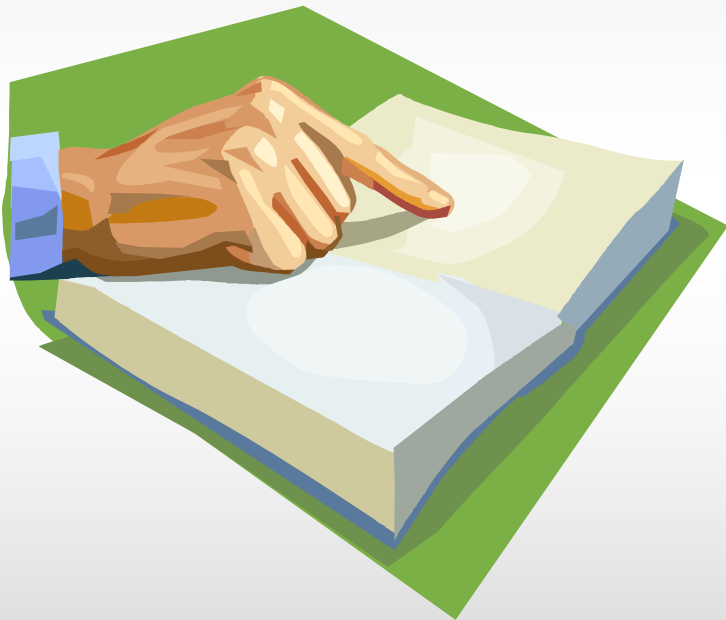
04/25/2007





2007/11/30

Number 1 – You need a plan!



**Hazardous Waste
Contingency and
Emergency Procedures
Plan
For
ABC Company
5 Empire Drive.
St Paul, MN
EPA ID # MND 000 123 456**

Prepared by: Joe Safety Regulatory
Compliance Spec.
Draft Date: February 26, 2008
Revision Date: NA

Approved by: _____
(Director, Facility Services) (Date)

Approved by: _____
(Primary Emergency Coordinator) (Date)

Approved by: _____
(Alternate Emergency Coordinator) (Date)

Do I have a spill?

- Distinguish between *incidental* and *emergency* releases

Incidental Releases

- Small releases of known materials which can be safely and effectively handled by the employees in the immediate area who are familiar with the material
- Required training: hazard communication, emergency response plan, and PPE (as necessary)

Emergency Releases

- Releases of unknown materials or larger releases of known materials which require outside assistance
- Releases that cannot be absorbed, neutralized, or controlled with minimal risk
- Training: emergency response training, hazard communication and emergency response plan

Chemical Spill Emergency Procedures

- **Evacuate**
- **Confine**
- **Report**
- **Secure**

Evacuate

- Leave the spill area; alert others in the area and direct/assist them in leaving. Consider assigning emergency coordinators. “Has authority to commit financial and physical resources to rectify situation”
- Without endangering yourself: remove victims to fresh air, remove contaminated clothing and flush contaminated skin and eyes with water for 15 minutes if necessary. If anyone has been injured or exposed to toxic chemicals or chemical vapors, call 911 and seek medical attention immediately.

Confine

- Close doors and isolate the area. Prevent people from entering spill area. Know how your ventilation system works.
- If outside, use caution tape to warn others to stay away.

Report

- From a safe place, call your internal spill activation number.
- Report that this is an emergency and give your name, phone and location; location of the spill; the name and amount of material spilled; extent of injuries; safest route to the spill. Obtain a MSDS on the product.
- Stay by that phone and be available for follow-up questions.
- Do not attempt to clean up or stabilize spills which are considered high hazard (fire, health or reactivity hazard). In the case of a small spill and low hazard situation, make certain you understand what precautions and protective equipment to use.

Report – continued

- If needed, report IMMEDIATELY or as soon as practical:
 - Local (911) - threats to public safety
 - State (Duty Officer):
 - releases above the reportable quantity (RQ)
 - release to environment (soil or water)
 - petroleum releases > 5 gallons
 - Information to have ready**
 - Name, location and EPA ID # location
 - Date, time and type of incident
 - Type and quantity of material spilled including MSDS
 - Injuries?
 - Public safety threats
 - Quantity and disposition of recovered materials (in soil, absorbents, etc.)
 - Federal (National Response Center) - RQ releases
 - OSHA - incident involves fatality or hospitalization of 3 or more workers
 - MCES - releases to sanitary sewer
 - Local public and private entities if needed – local Publicly Owned Treatment Works (POTWs), neighbors, others?

Do I exceed the RQ?

RQ-Calculator

v.2.0



<http://homer.ornl.gov/rq/>

Secure

- Until emergency response personnel arrive: block off the areas leading to the spill, lock doors, post signs and warning tape, and alert others of the spill.
- Post staff by commonly used entrances to the area to direct people to use other routes.

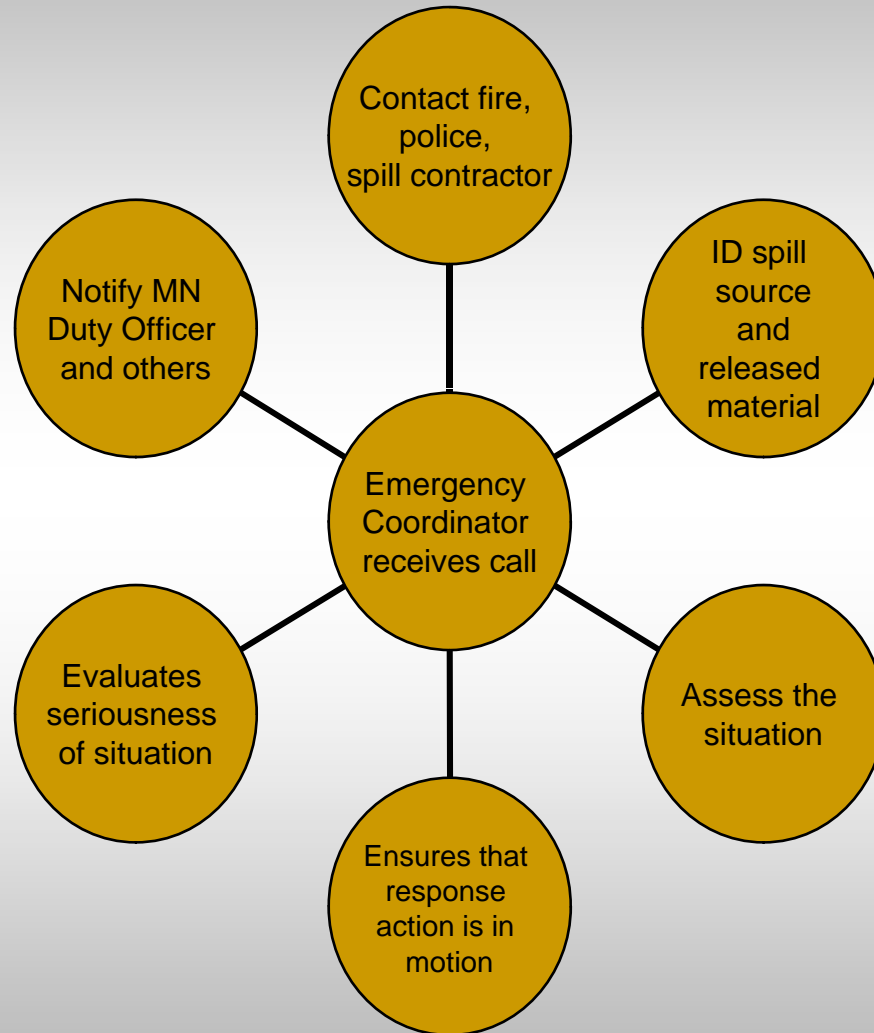
General Response Priorities

1. **Health and safety !** - victims, responders, public
2. Incident stabilization
3. Property protection
4. Environmental protection

Potential Receptors – Take a close look!

- Sanitary sewers
 - floor drains, sumps, access covers, sinks
- Storm sewers
 - Roof drains, storm water runoff, drainage ditches, holding ponds. Know your system and have access to sewer drawings.
- Walls, secondary containment integrity, valves, lockouts, gates.

Things to think about



Drain protection









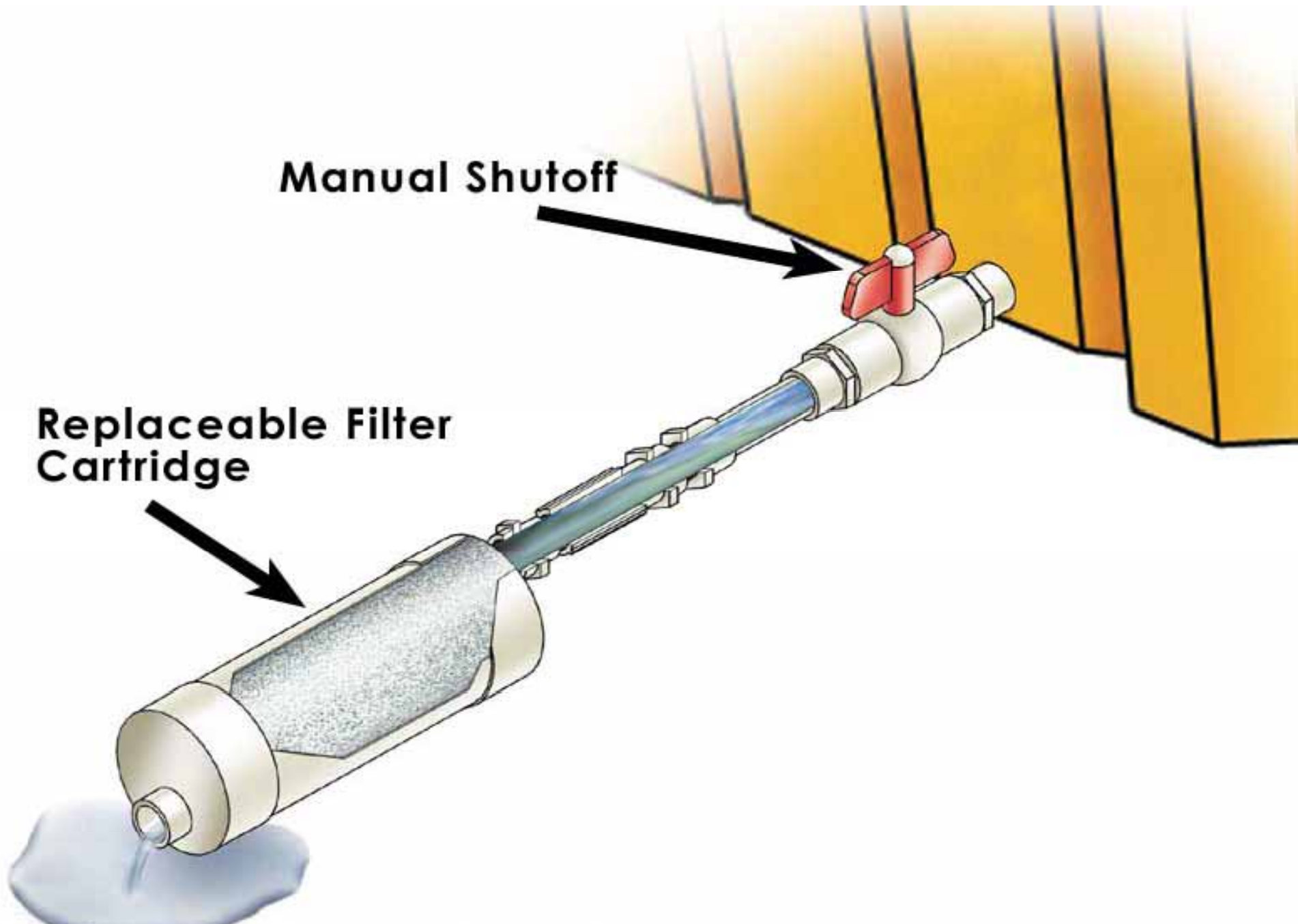
Manual Shutoff

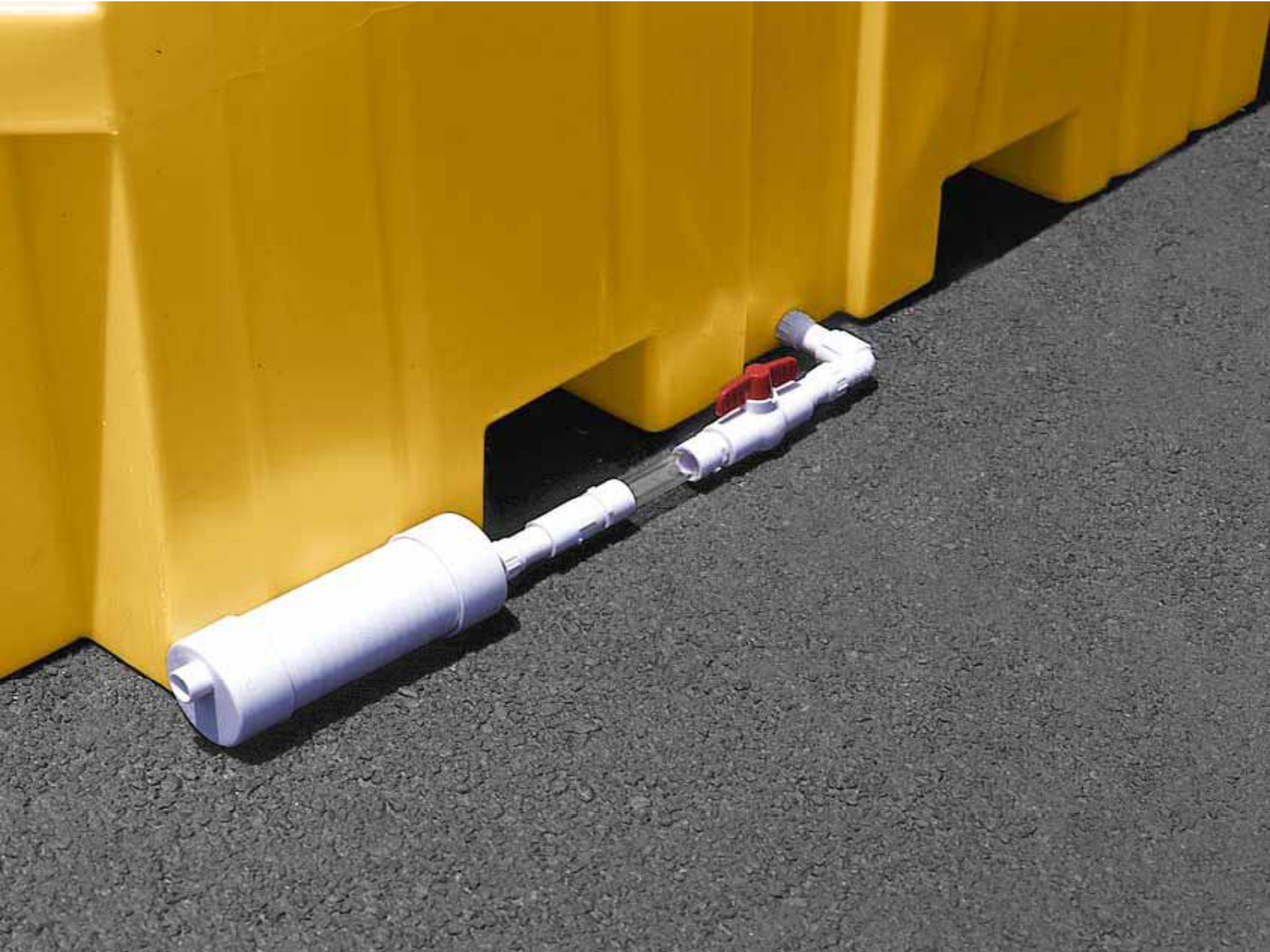


Replaceable Filter Cartridge



Outflow of clean water only





Natural
High-Efficiency
Absorbent

DRI-ZORB

**The Incineration
Advantage That
Saves You
Disposal Money.**

Incinerates with High
BTUs (7900/lb) and Low
Ash (1.6%) for proven,
cost-favorable disposal.
Absorbs oils, greases,
water and other liquids...
quickly, effectively.

Item No.
DZ-100

Net Weight 40 lbs. (18.14 kg)

2008/02/13



GLOVES / PPE

2008/02/13



Type 151

2008/02/13

17 in x 3 cm x 10
Sheet H
1 Bale

CAUTION SAFETY HAZARD KEEP AWAY



Made in U.S.A.

CAUTION

2008/02/13

Questions/Comments





Bay West

Delivering Environmental, Industrial, and Emergency Solutions

Patrick Martin

Emergency Response Manager

Bay West

5 Empire Drive

St Paul, MN 55103

651-291-3412

patm@baywest.com