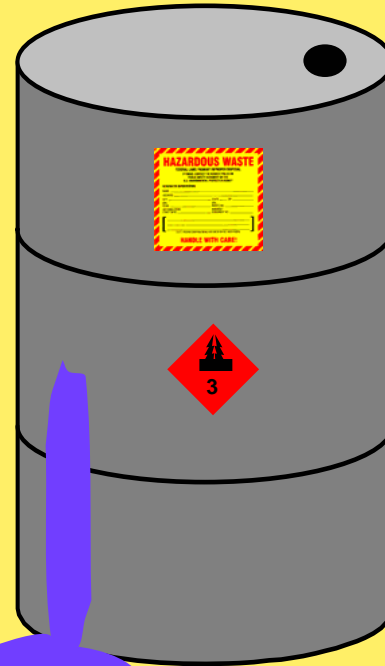
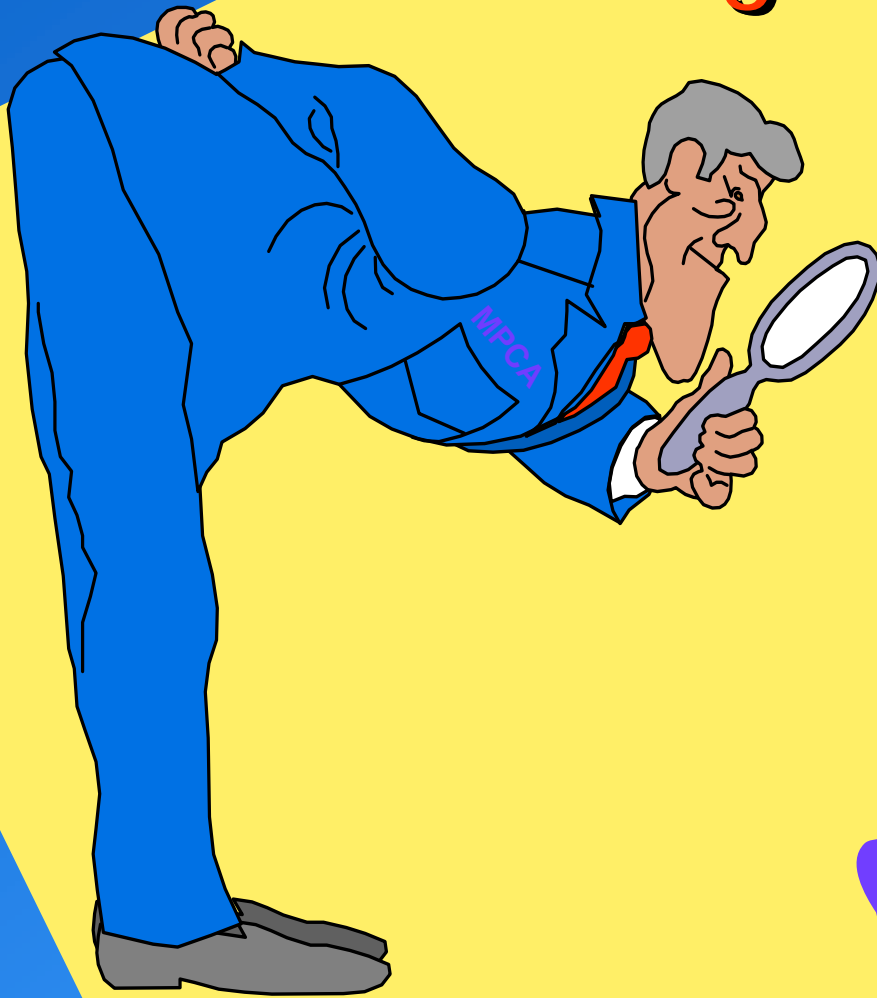


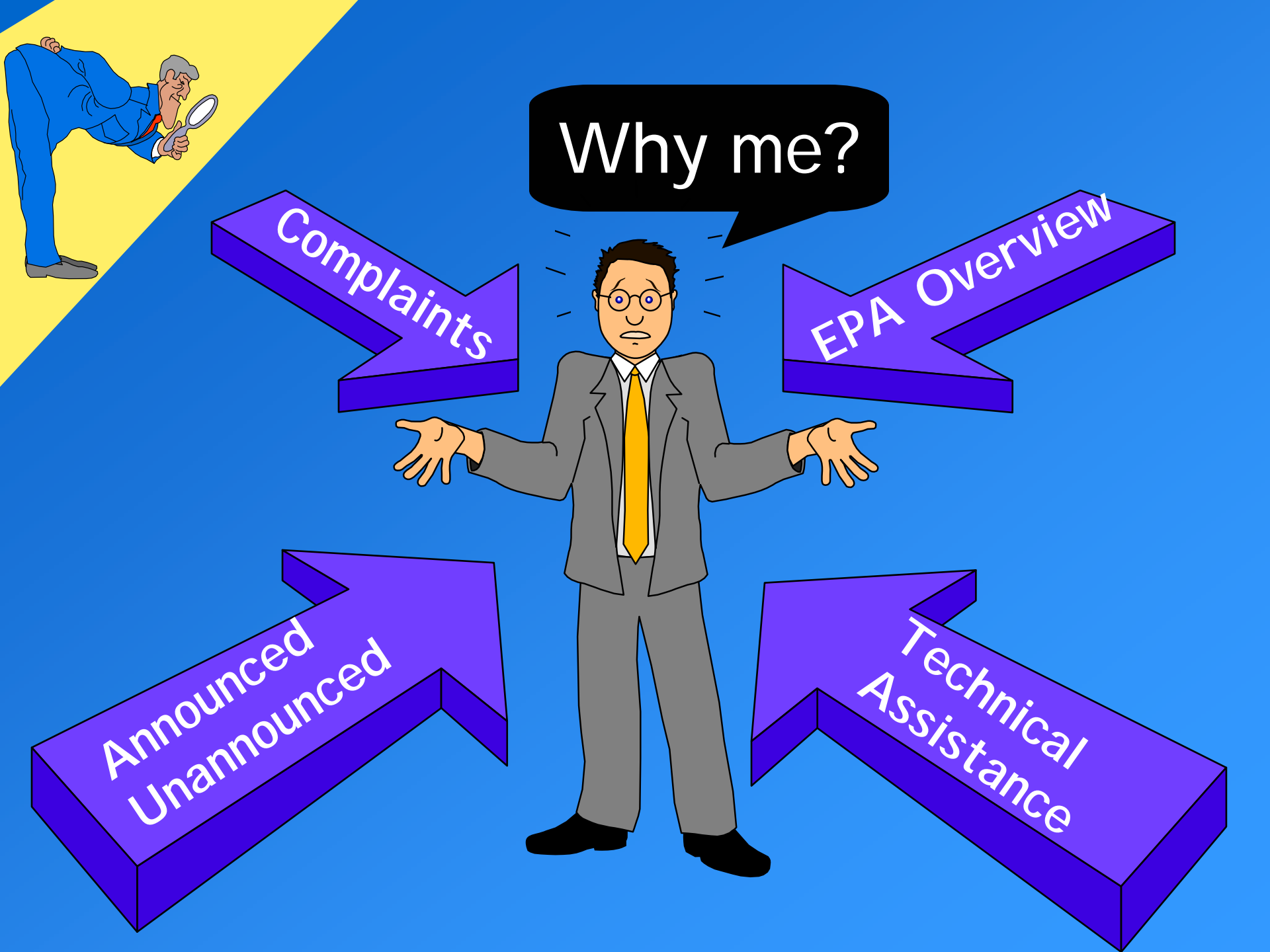
Through the Eyes of the Inspector





Why do inspections?





Why me?

Complaints

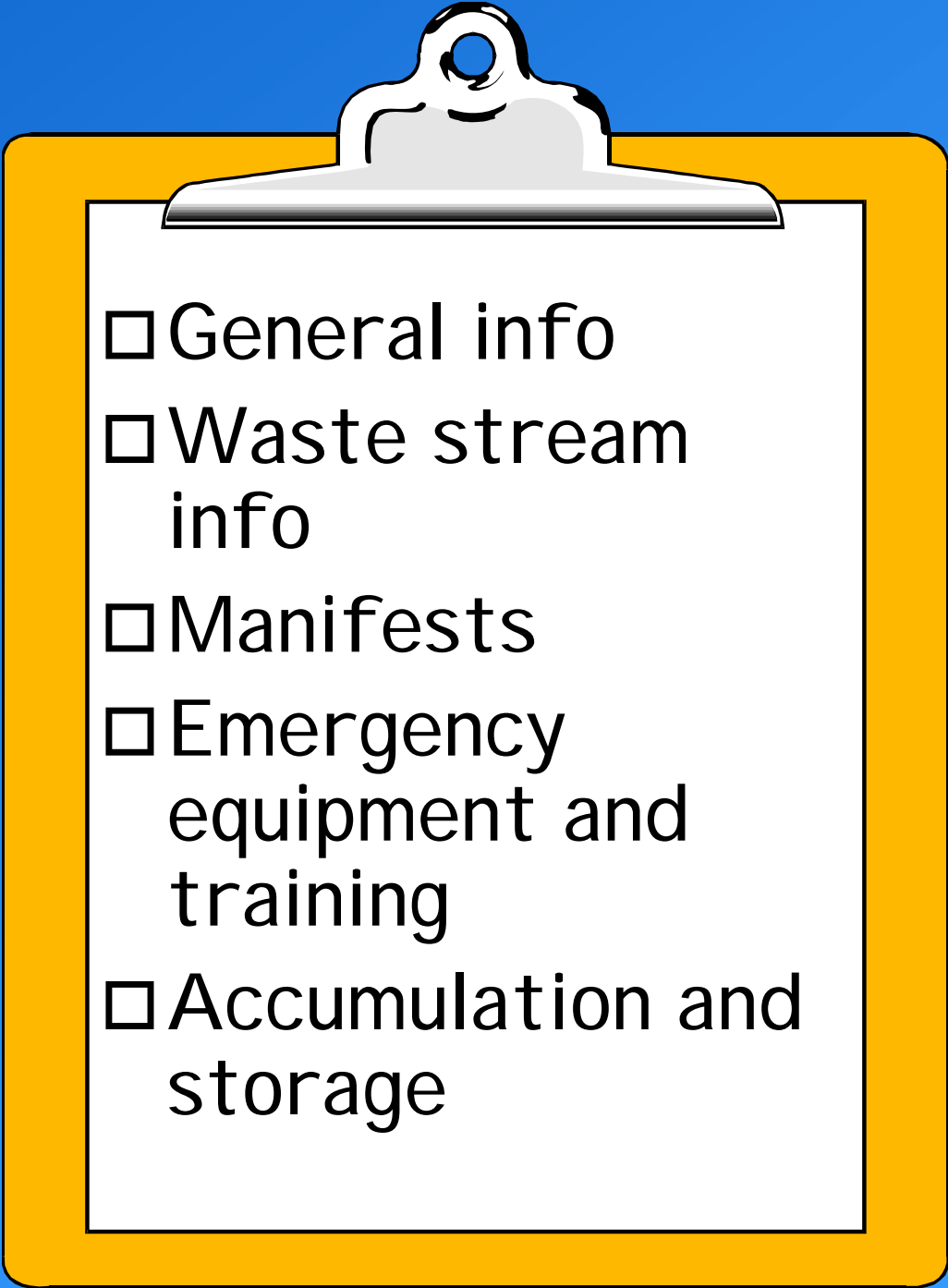
EPA Overview

Announced
Unannounced

Technical
Assistance



The Inspection Checklist

- 
- General info
 - Waste stream info
 - Manifests
 - Emergency equipment and training
 - Accumulation and storage

General Information



General info

Waste stream info

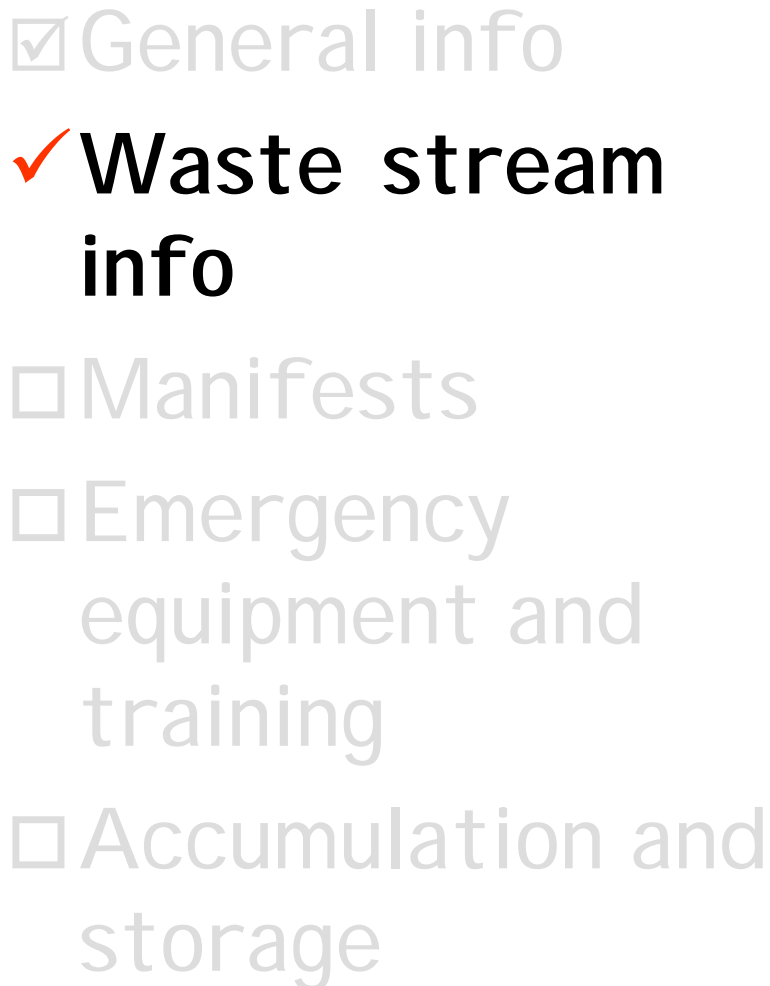
Manifests

Emergency equipment and training

Accumulation and storage

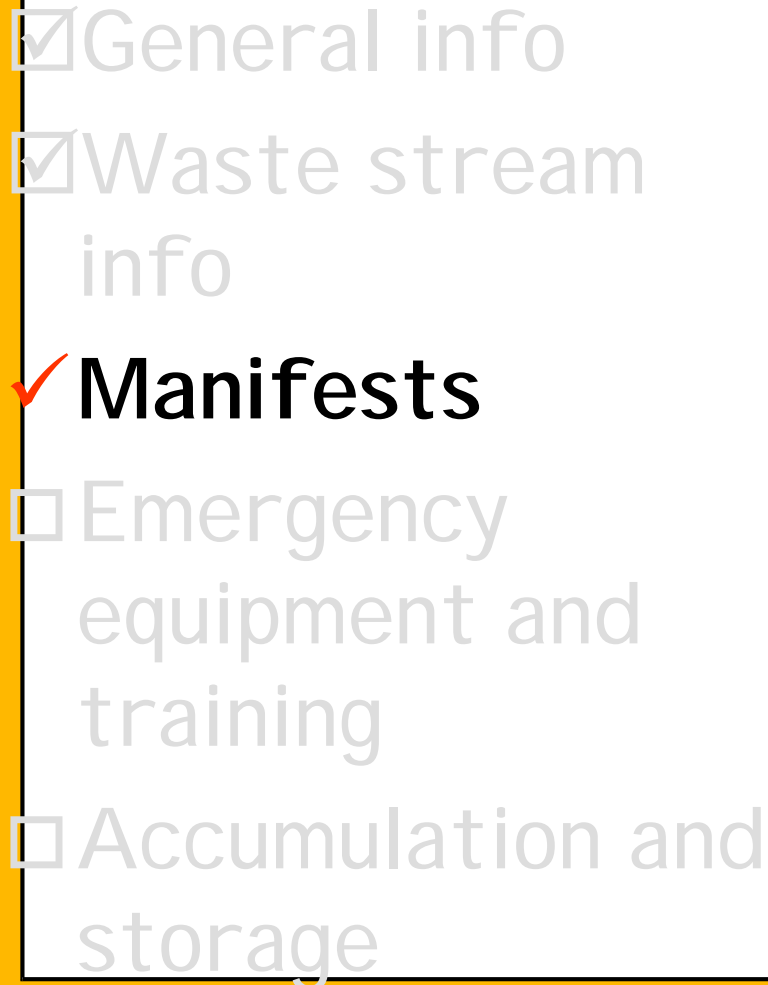
- Name, location
- Generator ID number
- Inspection date, time
- Generator size
- Name of inspector & company staff person
- Number of employees
- Years in business
- License posted*

Waste Stream Info

- 
- General info
 - Waste stream info**
 - Manifests
 - Emergency equipment and training
 - Accumulation and storage

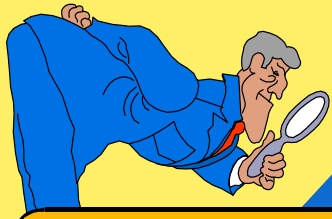
- Disclosed waste vs. non-disclosed waste streams
- Waste evaluations
- Sewering/burning permits

Manifests

- 
- General info
 - Waste stream info
 - Manifests**
 - Emergency equipment and training
 - Accumulation and storage

- Copies available
- Manifest data
- Tracking
- LDR notifications
- Exception reports

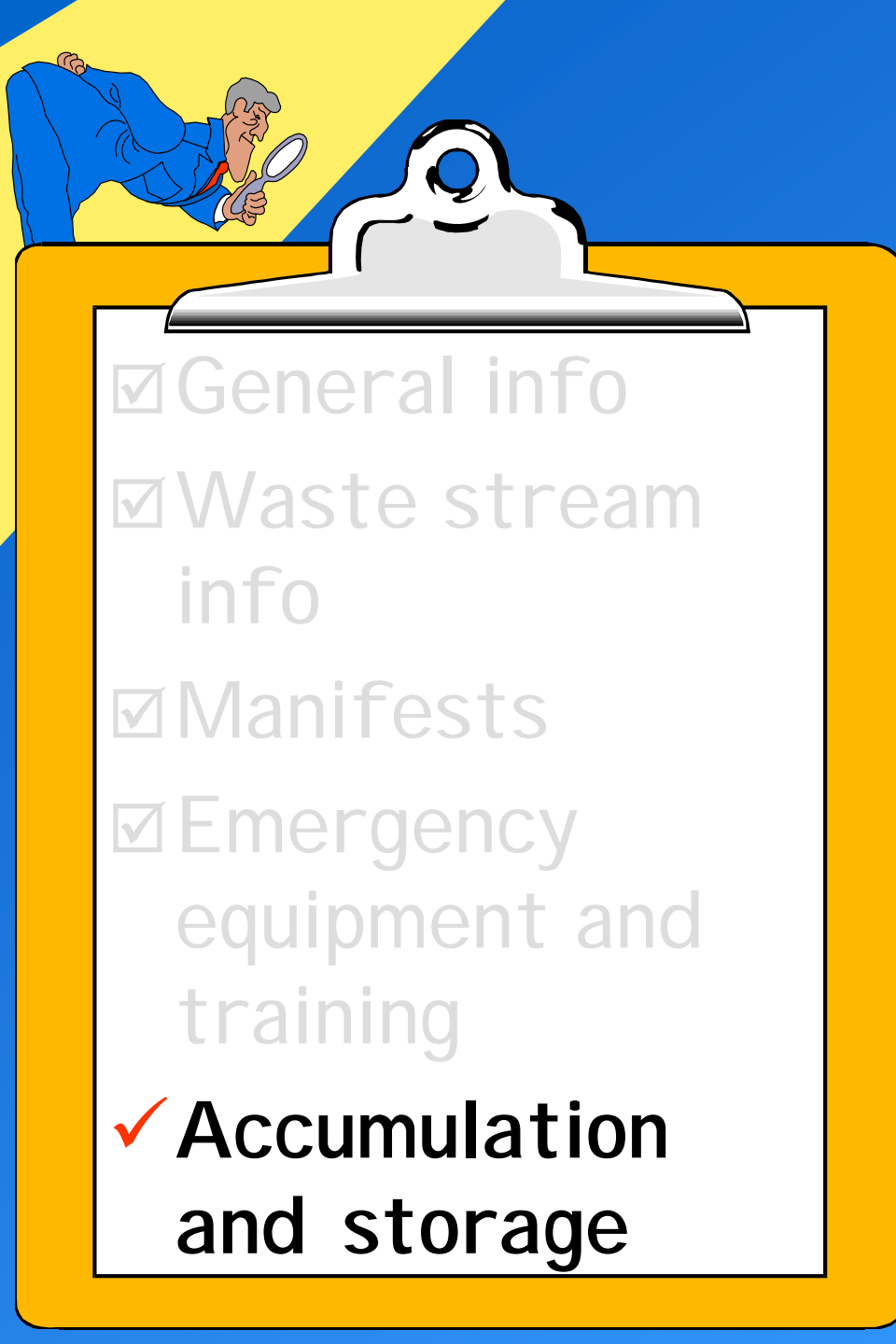
Emergency Equipment and Training



- General info
- Waste stream info
- Manifests
- Emergency equipment and training**
- Accumulation and storage

- Communication
- Fire/spill control
- Testing/maintenance
- Notification of authorities
- Personnel training
- Documentation

Accumulation and Storage

- 
- General info
 - Waste stream info
 - Manifests
 - Emergency equipment and training
 - Accumulation and storage**

- Containers marked
- Containers closed
- Container condition
- Aisle space
- Indoor/outdoor storage
- Satellite accumulation
- Amount of waste on site
- Weekly inspection



Common Violations

- Open containers, marking, date
- Weekly inspections
- Evaluation of waste
- Emergency planning; notifying local authorities
- Manifest, LDR notifications
- Personnel training
- Facility operation





The Forum Process

- Case background, history
- Current violations
- Discussion, questions
- Inspector recommendation
- Discussion, concurrence





Compliance tools

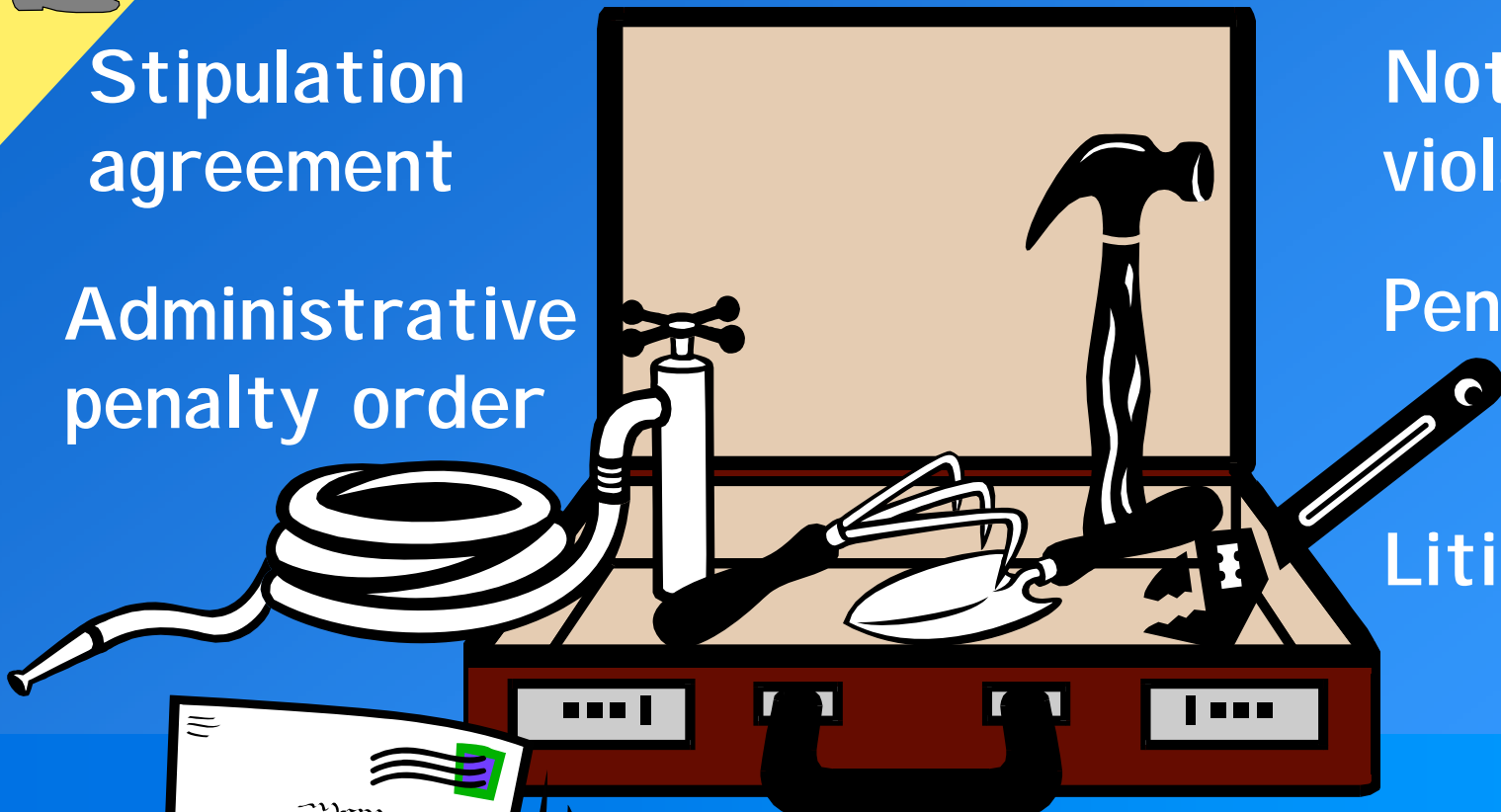
Stipulation agreement

Administrative penalty order

Notice of violation

Penalties

Litigation

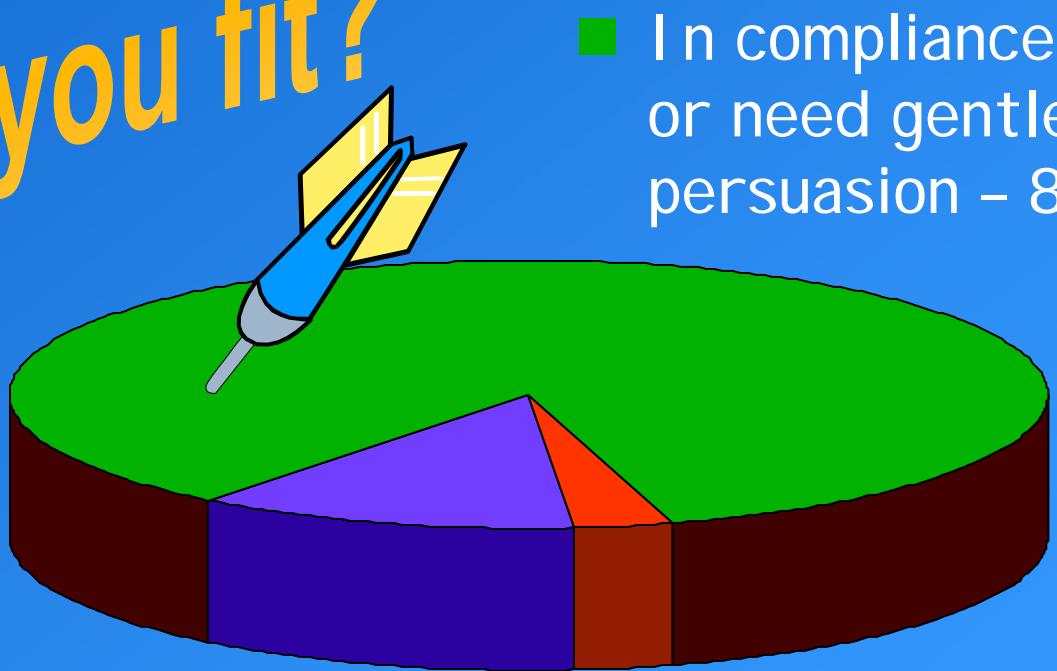


Letter



Distribution of businesses

Where do you fit?



■ In compliance, trying or need gentle persuasion – 85%

■ Need convincing or require stronger approach 12%

■ Criminal activities 3%

Your compliance keeps
Minnesota beautiful

