



Minnesota
Pollution
Control
Agency

Making Storm-Pond Dredging Decisions

Flowcharts for managing urban storm ponds

wq-strm4-13 • June 2009

The following three diagrams should help you understand and make decisions about storm pond inspection and dredging process. These diagrams can be used along with the [Dredge Materials Management](#) guidance document to plan storm-pond maintenance-project work.

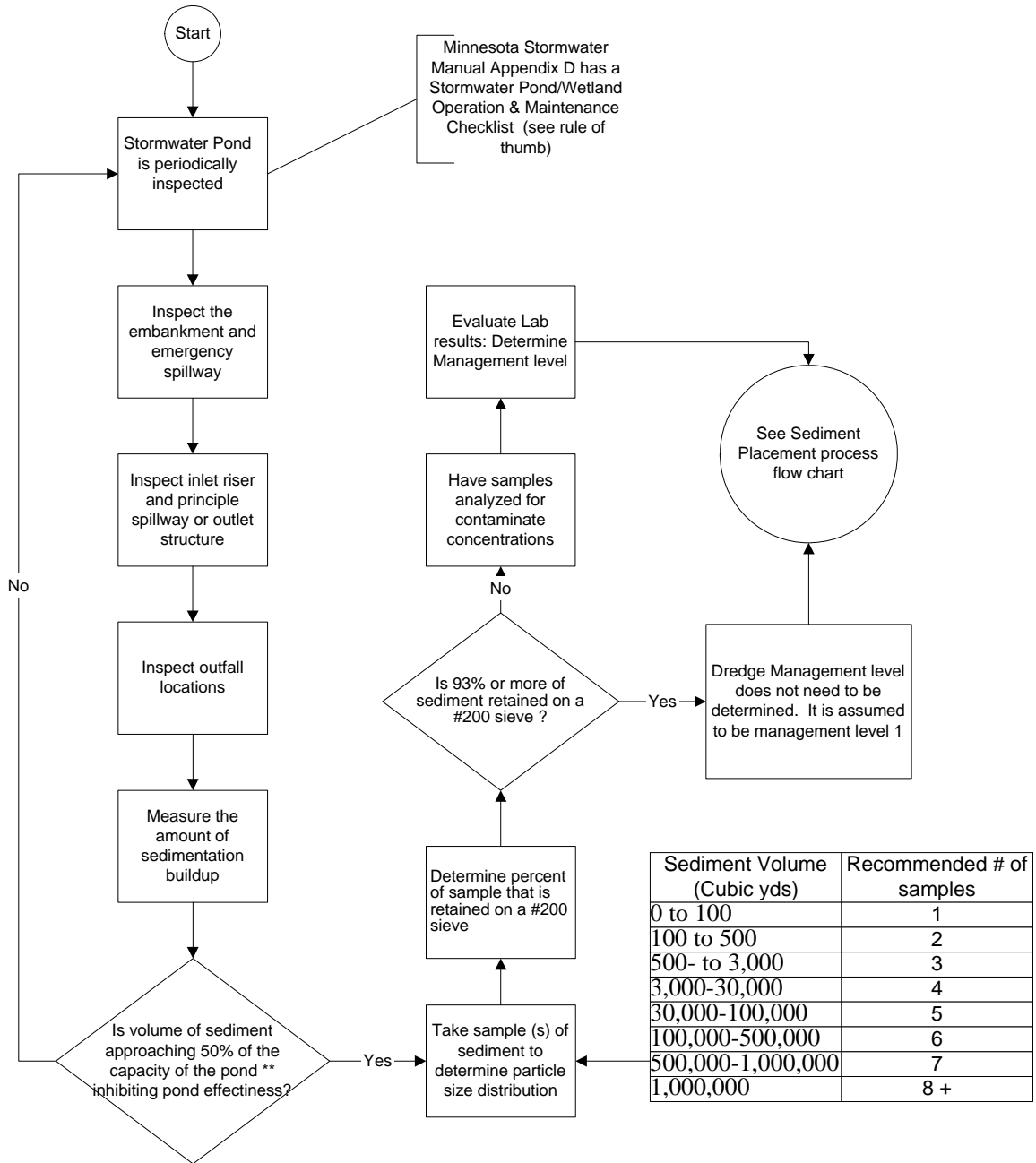
The guidance manual covers important factors that apply to all types of dredging projects, however, it also has a specific section dedicated to storm ponds in Chapter 6.

Diagram 1 is an overview of some key points in the planning process.

Diagram 2 contains more detailed steps for inspection of ponds and sampling sediment.

Diagram 3 contains decision steps to determine proper placement of sediment removed from storm ponds.

Diagram 1. An overview of the storm-pond dredging decision process



** or less than 3 feet of water at the inlet half of pond

Diagram 2. Detailed steps for inspecting and sampling storm ponds.

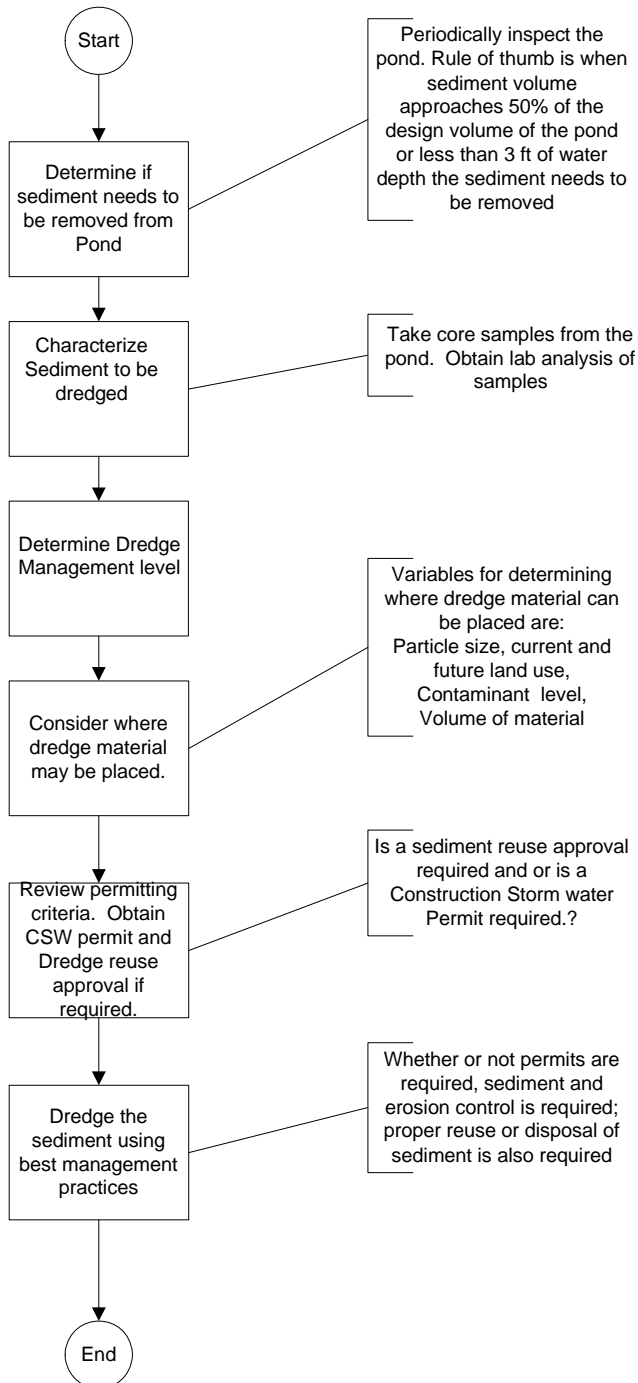


Diagram 3. How to determine the proper placement of sediment removed from storm ponds.

