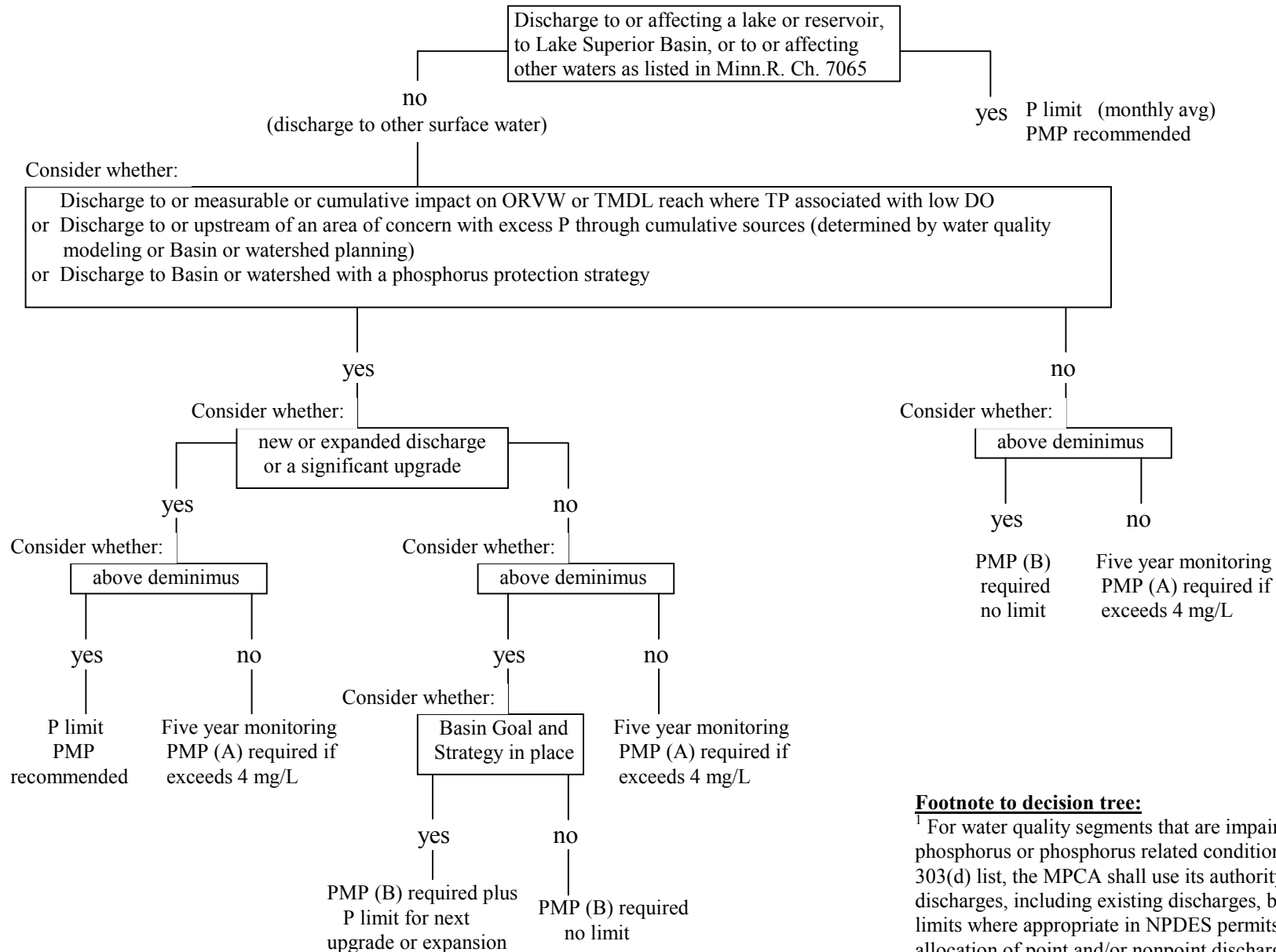


### MPCA Phosphorus (P) Strategy: NPDES permits <sup>1</sup>



**Footnote to decision tree:**

<sup>1</sup> For water quality segments that are impaired or threatened for phosphorus or phosphorus related conditions as listed on the 303(d) list, the MPCA shall use its authority to limit point source discharges, including existing discharges, by including phosphorus limits where appropriate in NPDES permits as part of a TMDL allocation of point and/or nonpoint discharges. This consideration is also included as a part of the permitting checklist.

**Acronyms:** ORVW = Outstanding Resource Value Water    P = Phosphorus    TMDL = Total Maximum Daily Load  
 TP = Total Phosphorus    DO = Dissolved Oxygen    PMP = Phosphorus Management Plan (A),(B) = permit language